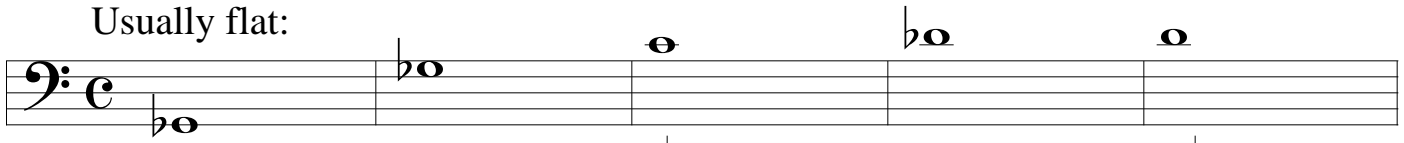


Euphonium Intonation

Usually flat:



2-3 valve comb., lip up

5th partials, slightly flat

Can use 6th partial alternates:

Usually sharp:

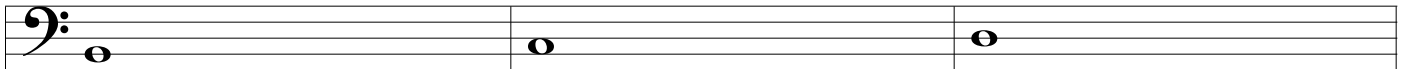


1-2-3 valve comb.
(usually not as bad as the next two)

(use 2-4 on 4-valve)

1-3 valve comb.
(usually not as bad as the next two)

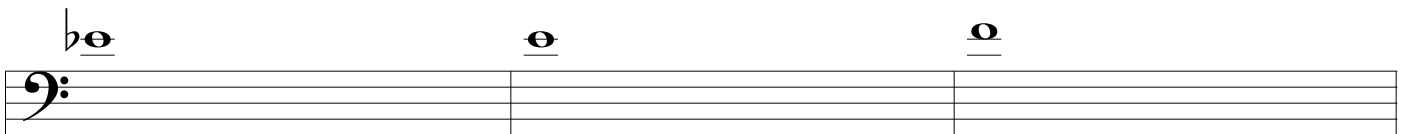
(use 4 on 4-valve)



(1-2-3 valve comb.)
(use 2-4 on 4-valve)

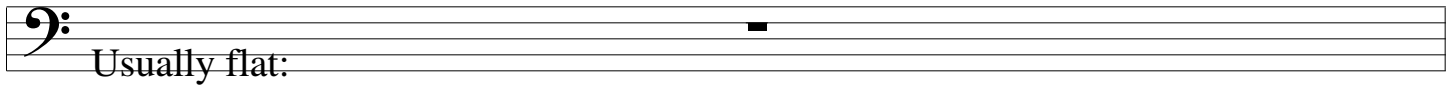
1-3 valve comb.
(use 4 on 4-valve)

1. Lip down.
2. Use 3rd valve.



6th partials--sharp

Can use 7th partial 1-2 (or 3 alone)



2-3 valve comb., lip up

5th partials, slightly flat
Can use 6th partial alternates:

Usually sharp:

1-2-3 valve comb.
(usually not as bad as the next two)

1-3 valve comb.
(usually not as bad as the next two)

(use 2-4 on 4-valve)

(use 4 on 4-valve)

(1-2-3 valve comb.)
(use 2-4 on 4-valve)

1-3 valve comb.
(use 4 on 4-valve)

1. Lip down.
2. Use 3rd valve.

6th partials--sharp

Can use 7th partial 1-2 (or 3 alone)