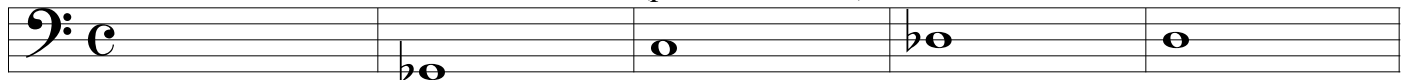


Tuba Intonation

Usually flat:



(push 1st slide in)

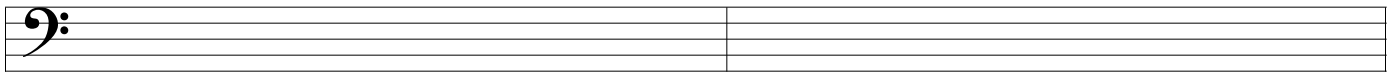


2-3 valve comb., lip up

5th partials, slightly flat

Can use 6th partial alternates:

Usually sharp:



1-2-3 valve comb.
(usually not as bad as the next two)
(use 2-4 on 4-valve)



1-3 valve comb.
(usually not as bad as the next two)
(use 4 on 4-valve)



(1-2-3 valve comb.)
(use 2-4 on 4-valve)

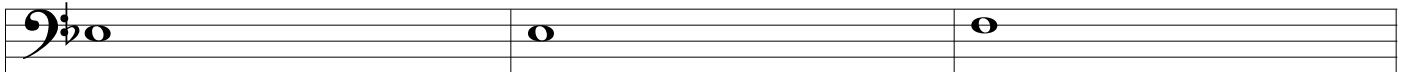


1-3 valve comb.
(use 4 on 4-valve)



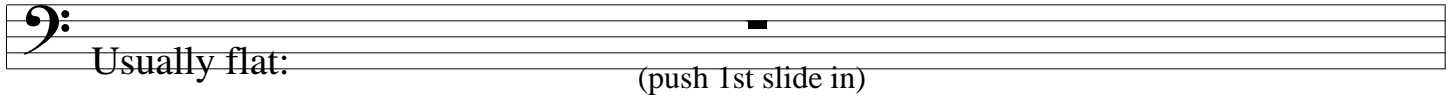
1. Lip down.
2. Pull first valve slide.
3. Use 3rd valve.

(pull 1st slide)



6th partials--sharp

Can use 7th partial 1-2 (or 3 alone)



2-3 valve comb., lip up

5th partials, slightly flat
Can use 6th partial alternates:

Usually sharp:

1-2-3 valve comb.
(usually not as bad as the next two)
(use 2-4 on 4-valve)

1-3 valve comb.
(usually not as bad as the next two)
(use 4 on 4-valve)

(1-2-3 valve comb.)
(use 2-4 on 4-valve)

1-3 valve comb.
(use 4 on 4-valve)

1. Lip down.
2. Pull first valve slide.
3. Use 3rd valve.

(pull 1st slide)

6th partials--sharp

Can use 7th partial 1-2 (or 3 alone)